

Headquarters U.S. Air Force

Integrity - Service - Excellence

Mather Groundwater Cleanup



**Presentation to the Sacramento
Central Groundwater Authority
Board of Directors
May 11, 2011**

**Doug Fortun
Mather Environmental Coordinator
Air Force Real Property Agency**

U.S. AIR FORCE

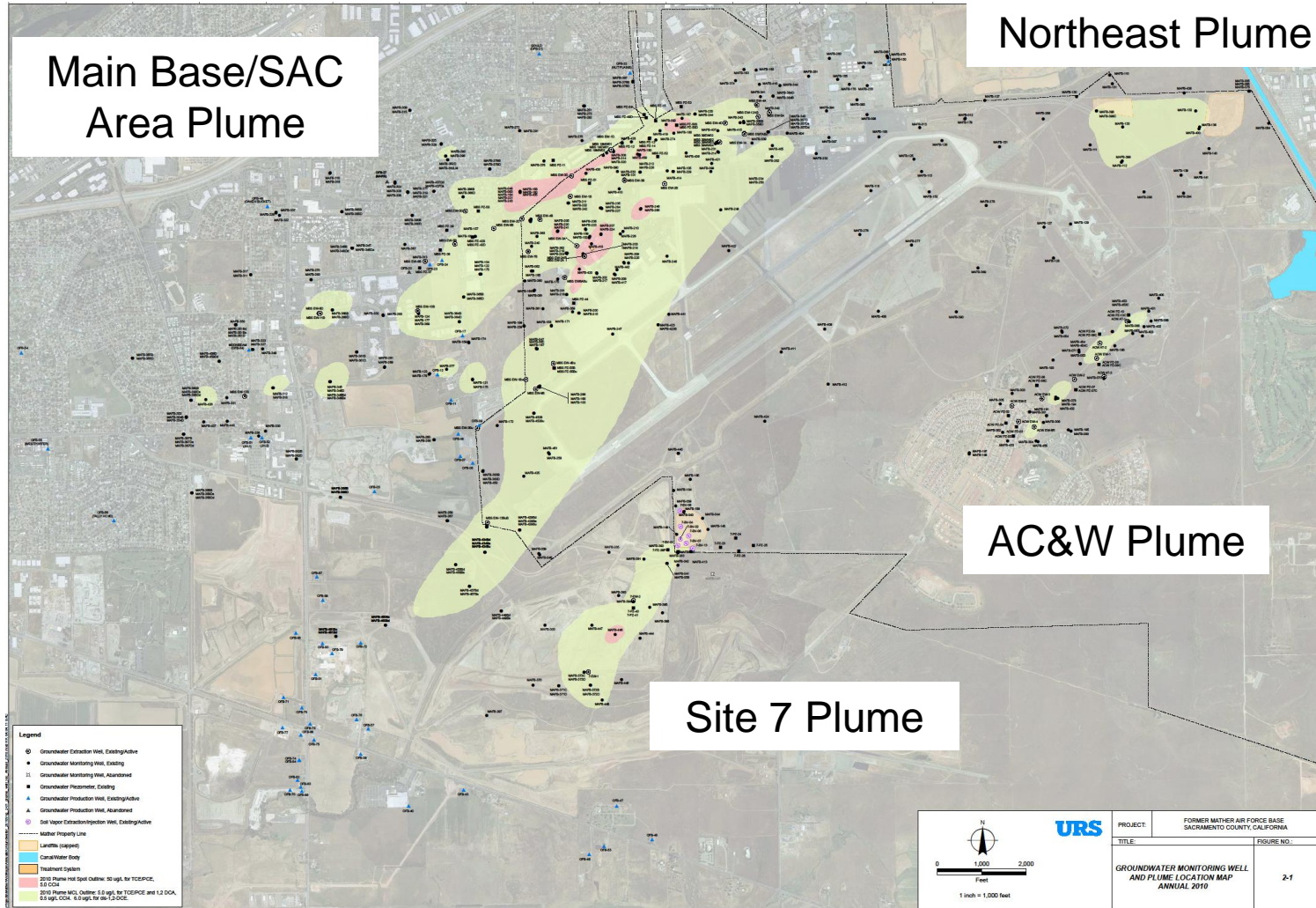


- **Four groundwater solvent plumes are associated with sources at Mather; contamination from the Inactive Rancho Cordova Test Site also underlies parts of Mather (Nov 2010 briefing by CVRWQCB)**
- **The Air Force began remedial investigations in 1982, and has been pumping and treating groundwater at Mather since 1994**
- **As of the end of 2010, about 10 billion gallons treated, and over 4000 pounds of contaminants removed. Combined pumping rate about 1600 gallons per minute; All but 100 gpm reinjected into aquifer**



U.S. AIR FORCE

Mather Plume Map





Main Base/SAC Area Plume

U.S. AIR FORCE

- **Extends from multiple sources in the Main Base and Strategic Air Command Areas of Mather westward off base past Bradshaw to about Mayhew, and southwestward off base beneath gravel pits**
- **Reaches depths of almost 200 feet below sea level at concentrations exceeding aquifer cleanup levels**
- **Predominant contaminants of concern are PCE, TCE, and carbon tetrachloride, with cleanup levels of 5, 5, and 0.5 ug/L**
- **24 extraction wells operating in 2011, with combined rate of up to 1575 gallons per minute; total concentration of volatile organic contaminants is about 15 ug/L**
- **Treated water is reinjected to deeper aquifer zone; seasonally some is used for street-side irrigation. Surface-water discharge structure has been built as alternative but not used to date.**



MBSA Area Plume (continued)

U.S. AIR FORCE

- **MBSA plume has impacted several water supply wells:**
- **1980's - Air Force provided alternate water for residents just west of Mather (Happy Lane, Mather Camellia Mobile Home Park, Old Placerville Road)**
- **1997 – Air Force installed well-head treatment at the Citizens Utilities (now California American) well at Moonbeam Drive and at Sacramento County's Juvenile Hall water system**
- **Low concentrations (< 1 ug/L PCE and/or TCE) have also been observed at three other CUCC/Cal Am wells**
- **The Air Force samples public supply wells quarterly, private wells monthly**



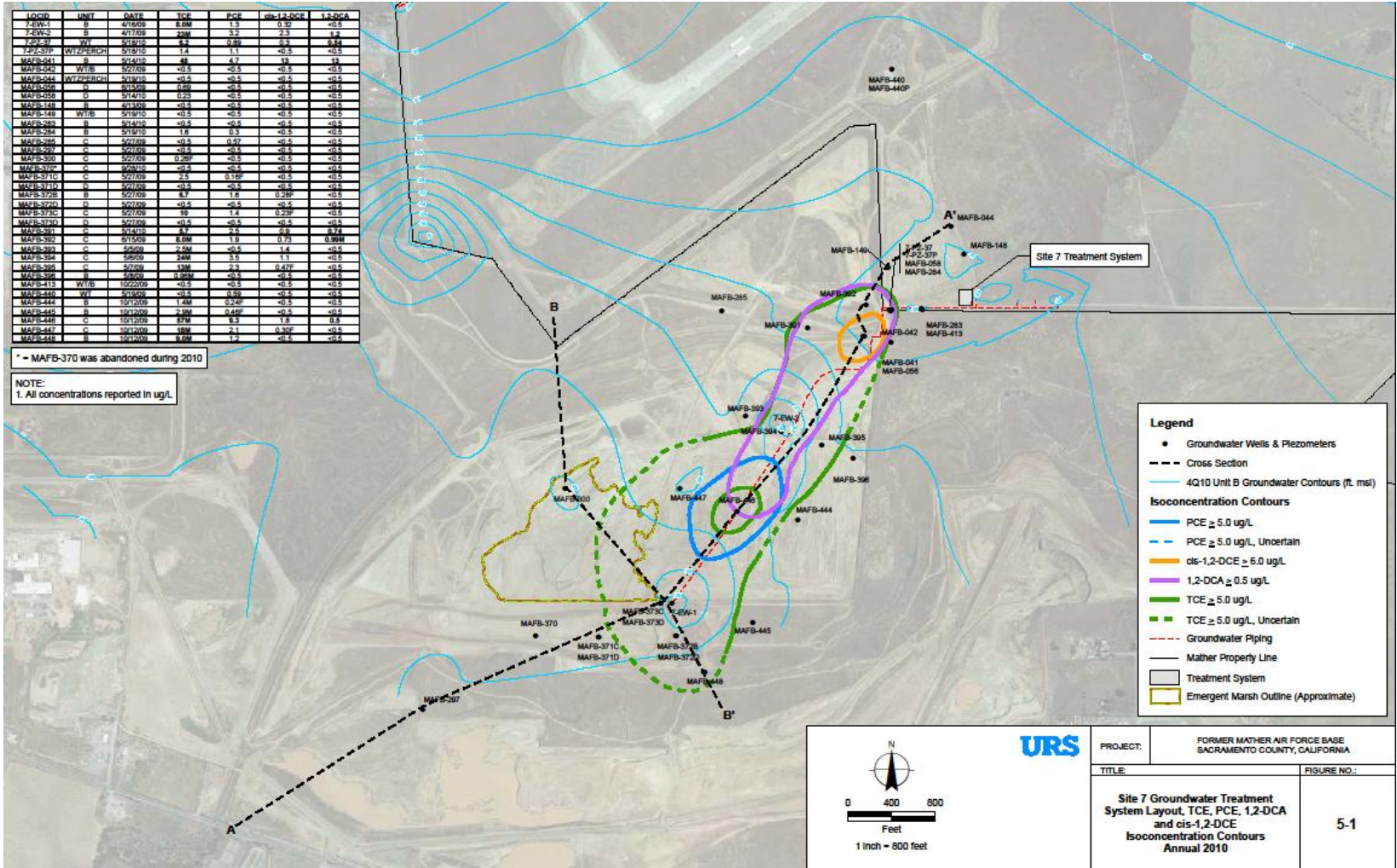
Site 7 Plume

- Extends from a disposal site on the south side of Mather off base about 4000 feet toward Jackson Highway, and to depths of about 60 feet below sea level
- Predominant contaminants of concern are PCE and TCE, both with cleanup levels of 5 ug/L
- Two extraction wells operate in 2011 with combined a combined rate of about 55 gpm. Total volatile organic contaminant influent concentration is about 20 to 22 ug/L; maximum concentration in plume is about 80 ug/L total VOCs (near-source)
- All treated water is reinjected to adjacent aquifer



Site 7 Plume Map

U.S. AIR FORCE





U.S. AIR FORCE

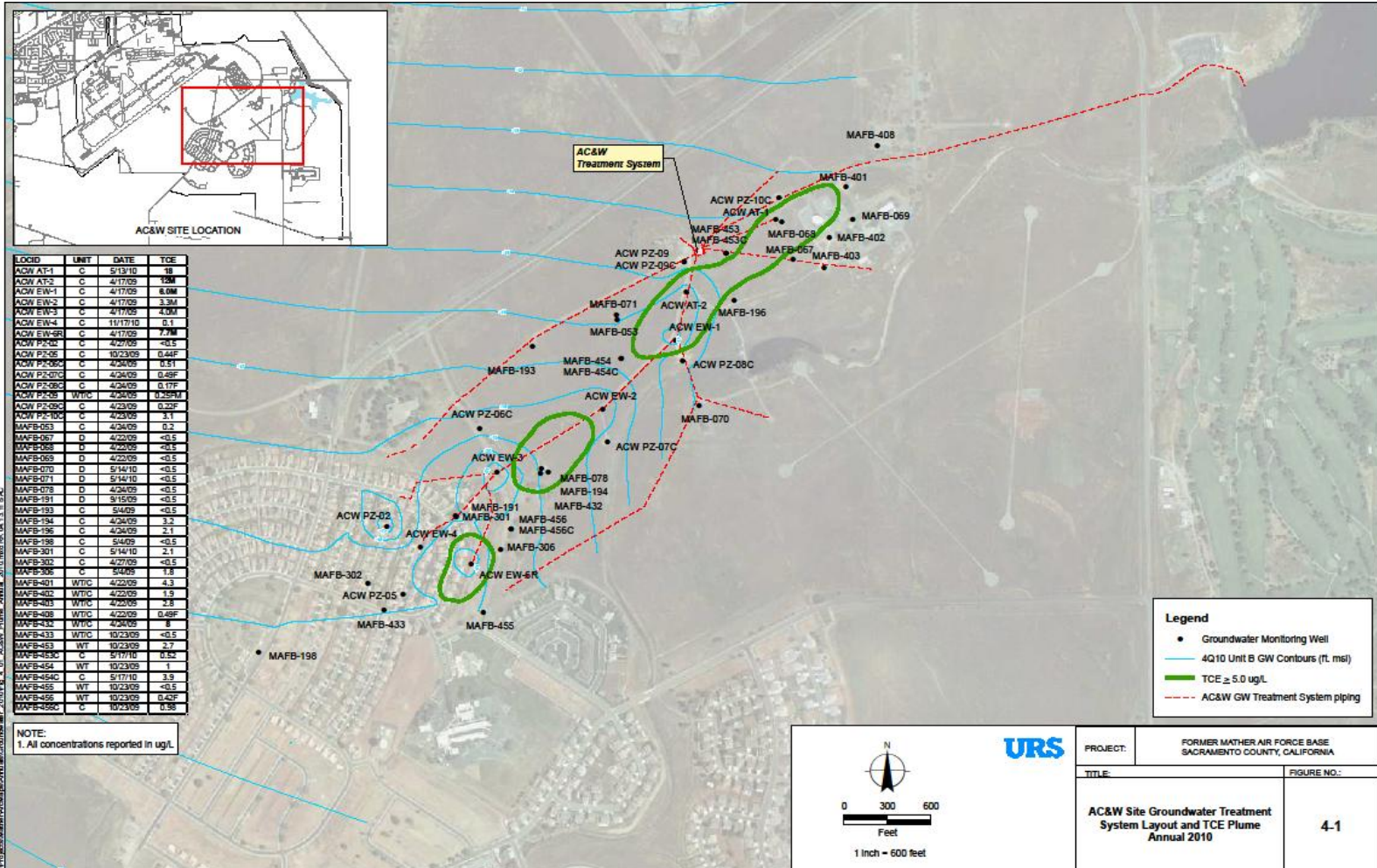
Aircraft Control & Warning (AC&W) Plume

- Extends from the source area near the AC&W radar 'golf ball' about 4000 feet southwesterly and beneath the margin of the former Mather Family Housing area, now Independence at Mather
- The only contaminant of concern is TCE with a cleanup level of 5 ug/L
- Six extraction wells operate in 2011 with a combined rate of about 106 gpm. TCE influent concentration is 5 to 6 ug/L; maximum concentration in plume about 18 ug/L
- Treated water is discharged to Mather Lake, although up to 50 gpm may be diverted for irrigation (has not been used for many years)



AC&W Plume Map

U.S. AIR FORCE





U.S. AIR FORCE

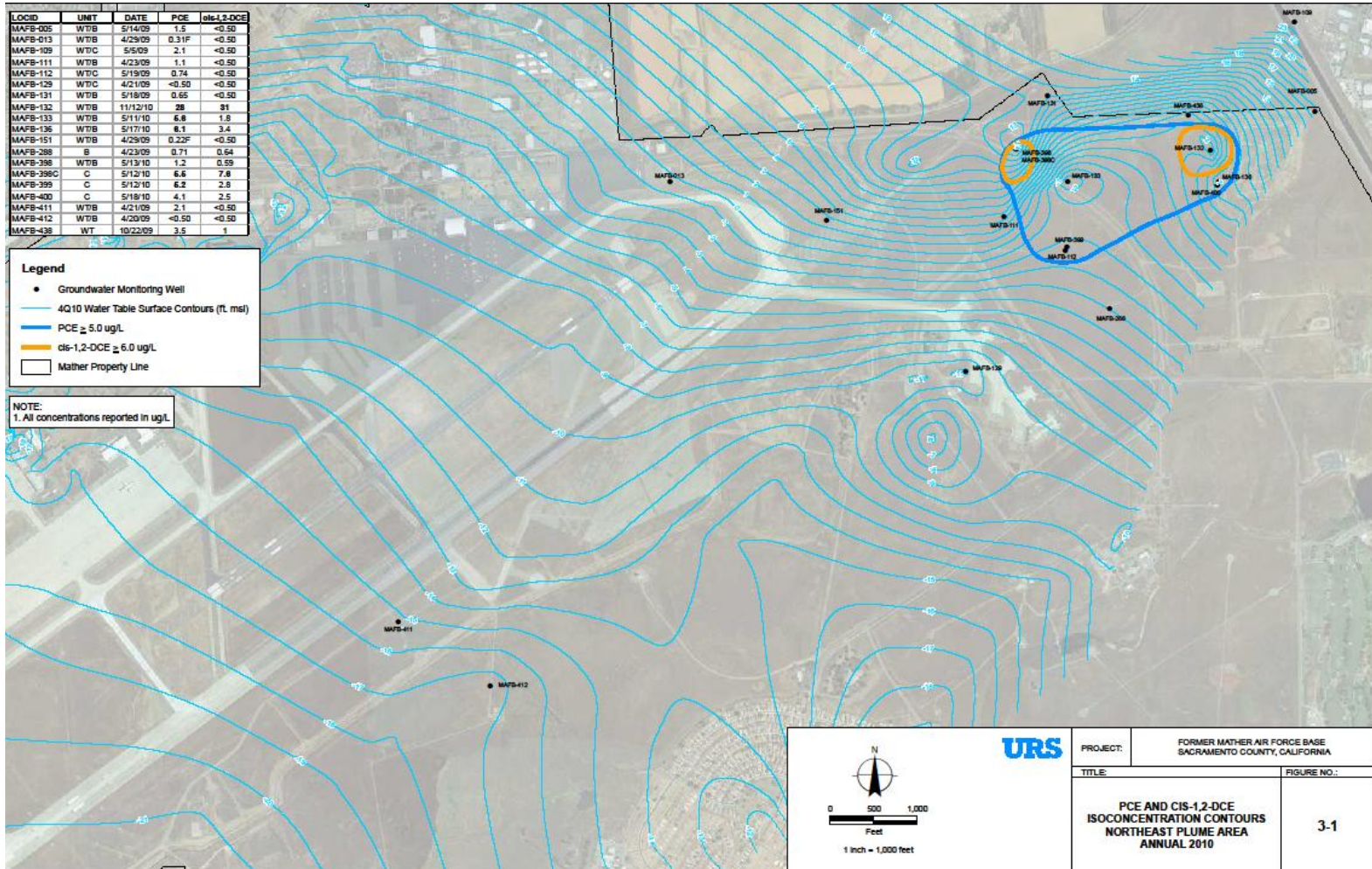
Northeast Plume

- **Sources at landfills; historically extended to southwest in gravel aquifer horizon. Now extent is limited as water table has dropped into underlying silty aquifer material**
- **Contaminants of concern are PCE and cis-1,2-DCE with aquifer cleanup levels of 5 and 6 ug/L respectively. Maximum concentrations at about 30 ug/L for each**
- **Remedy is long-term monitoring and institutional controls, in concert with 1996 capping or excavation of source landfills to eliminate rainwater percolating through the landfill waste**



Northeast Plume Map

U.S. AIR FORCE





U.S. AIR FORCE

Background

- **Mather AFB operated from 1917 through 1993, primarily as a training base but also hosting a wing of the Strategic Air Command**
- **Groundwater contamination discovered in 1979 in some Mather supply wells; CVRWQCB also discovered contamination in some off-base private wells**
- **Air Force Installation Restoration Program began with Records Search at Mather in 1982**
- **Mather AC&W Plume listed on National Priorities List in 1987**
- **Mather announced for closure and remainder of base placed on NPL IN 1989**



Remedial Action Timeframes

U.S. AIR FORCE

- **Aircraft Control and Warning (AC&W)
Plume: 1995 to approx 2020**
- **Main Base/SAC Area Plume: 1998 to
approx 2050**
- **Site 7 Plume: 1998 to approx 2040**
- **Northeast Plume (passive): 1996 to
approx**



Decision Documents

U.S. AIR FORCE

- **Records of Decision**
 - **Aircraft Control and Warning (AC&W) Operable Unit (OU-1)**
 - **ROD Signed Dec. 28, 1993**
 - **Groundwater OU (OU-2)**
 - **ROD Signed June, 1996**
- **Explanation of Significant Differences**
 - **AC&W**
 - **1997 - changed from injection to surface-water discharge**
 - **2008 - added institutional controls**
 - **Groundwater OU**
 - **2010 - clarified and added institutional controls**



U.S. AIR FORCE

Mather Groundwater Reports

- **Monthly letter reports are provided for supply well sampling**
- **Quarterly data is reported in a ‘fact sheet’ format with minimal interpretation**
- **Annual reports provide plume maps, potentiometric maps, evaluation of performance, and recommendations**



Where to find documents

U.S. AIR FORCE

- **Scanned images of documents are maintained at:**

**[https://afrpaar.lackland.af.mil/ar/
docsearch.aspx](https://afrpaar.lackland.af.mil/ar/docsearch.aspx)**

(select Mather from facility list; useful search categories are dates and key words)



U.S. AIR FORCE

Questions?

- **Contact Doug Fortun, AFRPA, at:
916 643-6420, ext 203
douglas.fortun@us.af.mil**

- **Contact Bill Hughes, ASE, at:
916 997-1564
hughes_william_t@bah.com**