



The Water Forum Agreement and SCGA



Tom Gohring
March 2015



Sacramento Region

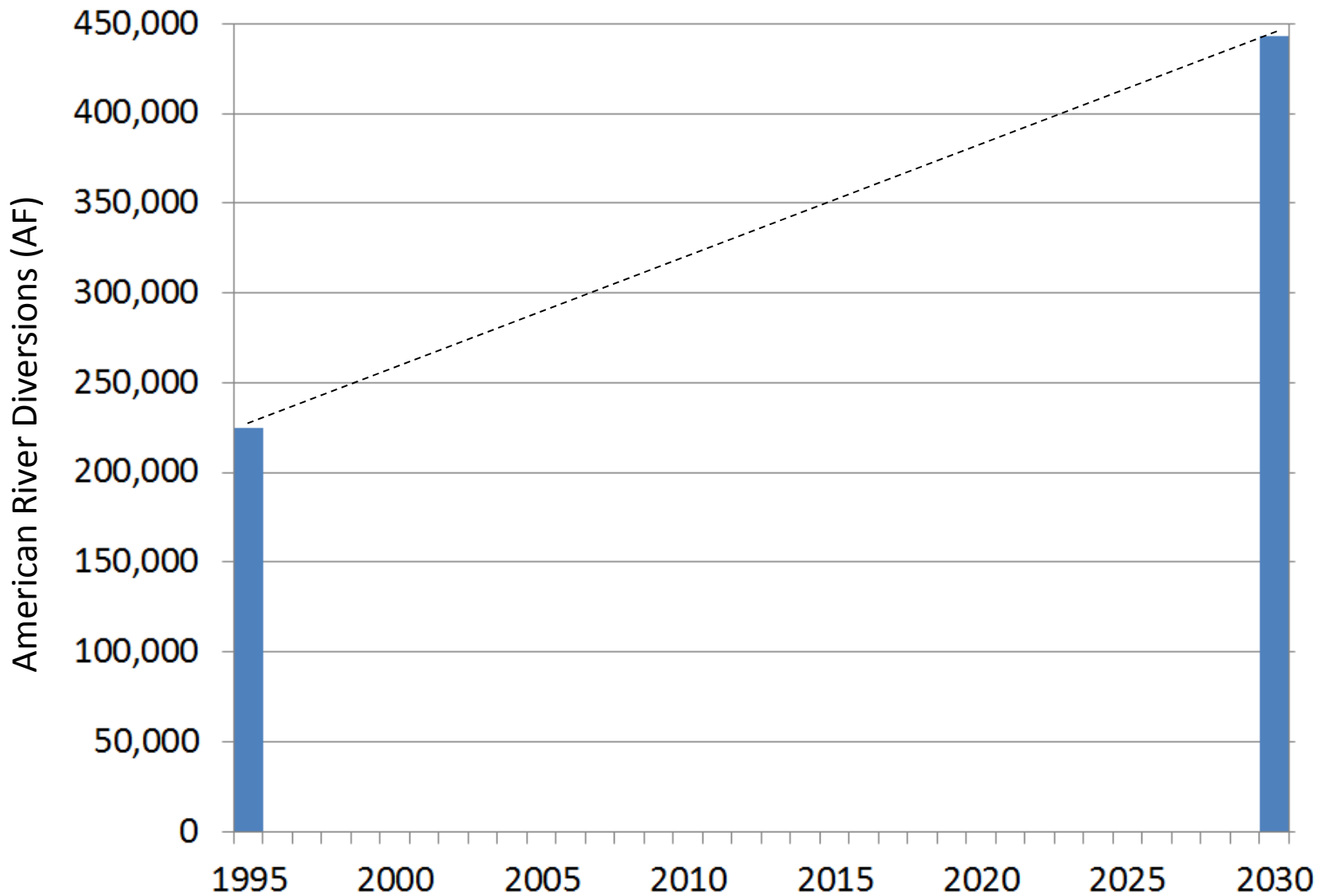
Water Challenges:

- Need water for economic growth
- Need water for healthy ecosystem

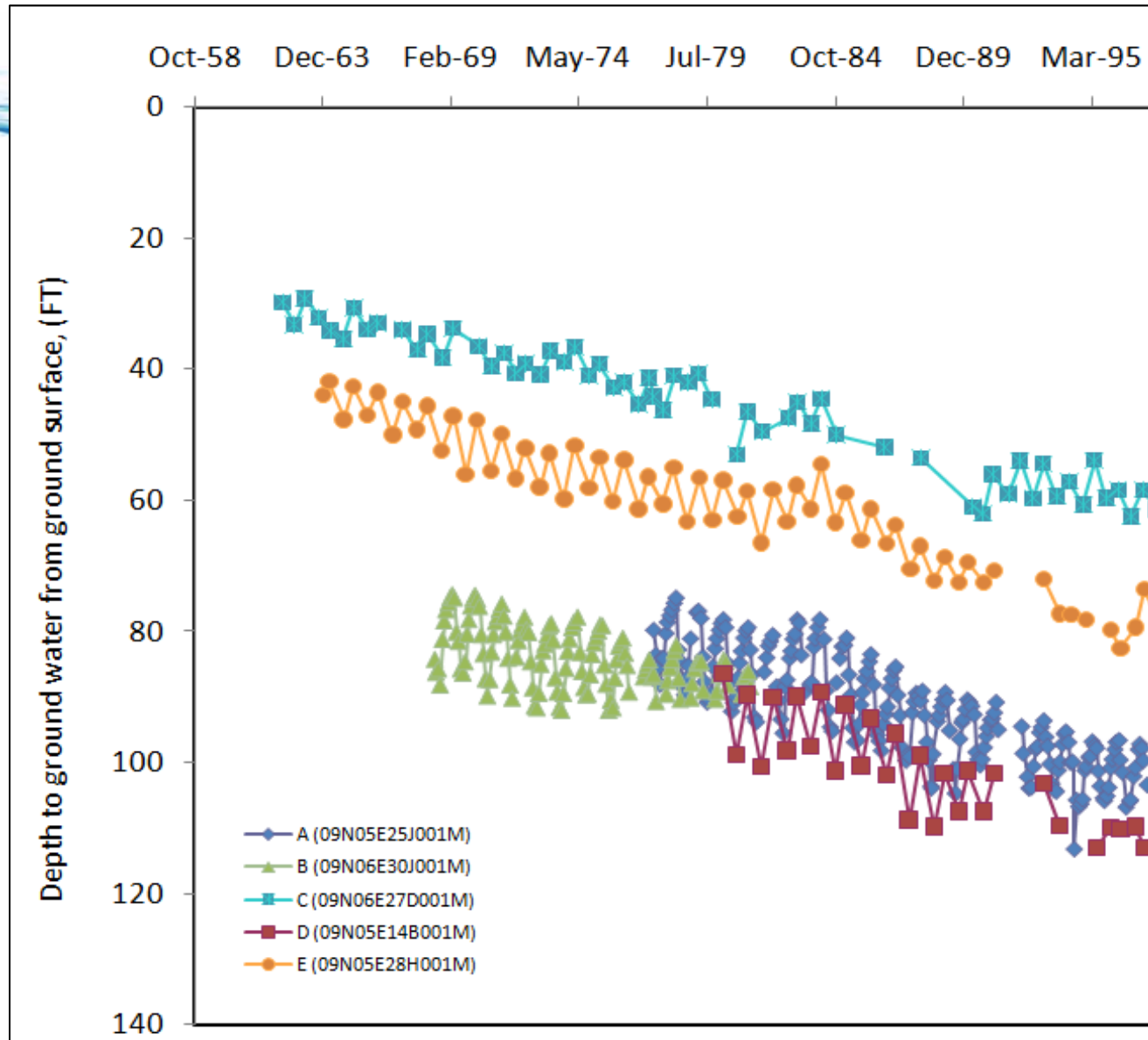




Future Surface Water Demand (Projected in 1998)



Declining Groundwater Levels



Regional Contamination Plumes

(Based on 2007 Data)

Legend

Remediation Well

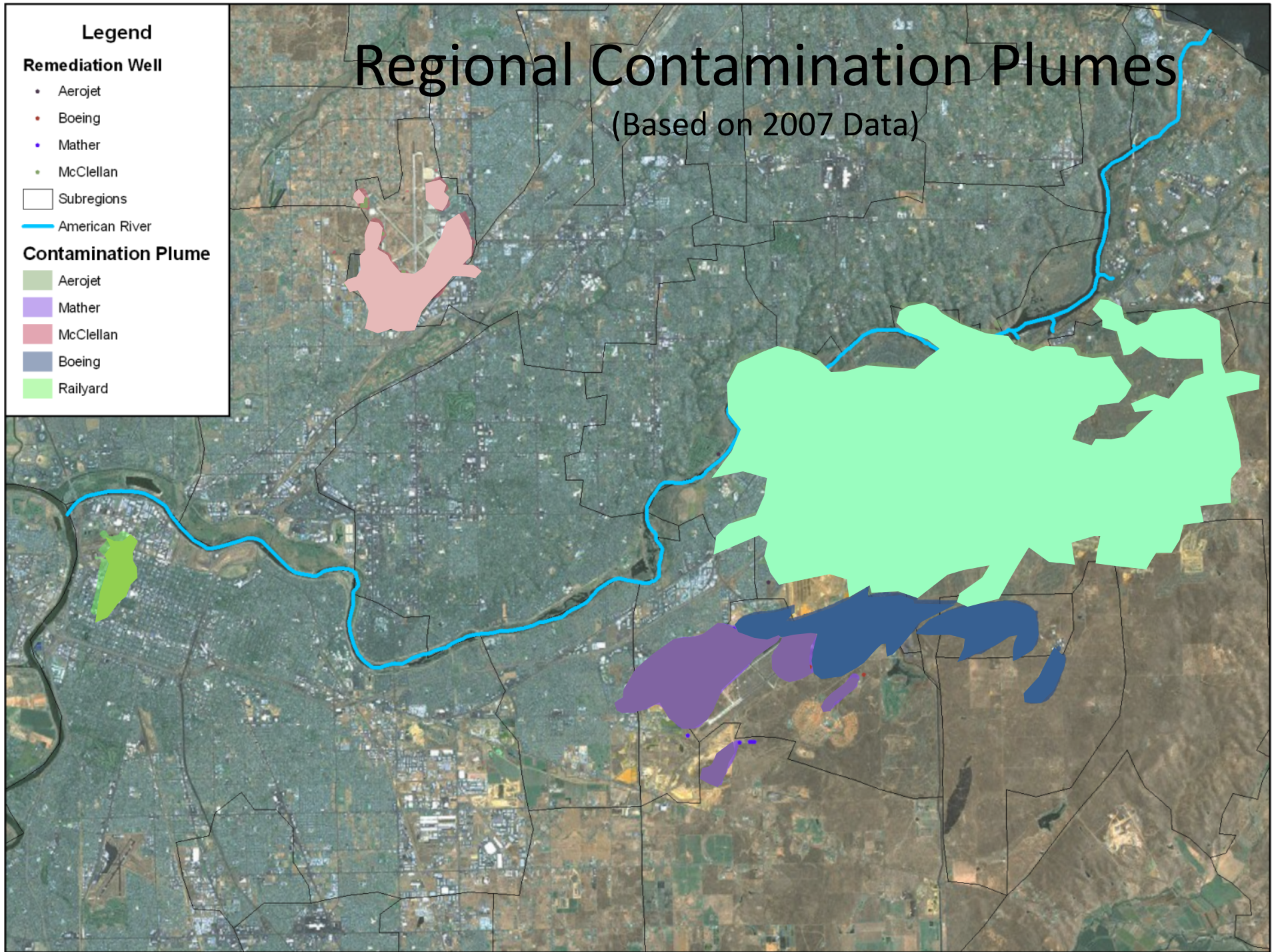
- Aerojet
- Boeing
- Mather
- McClellan

Subregions

American River

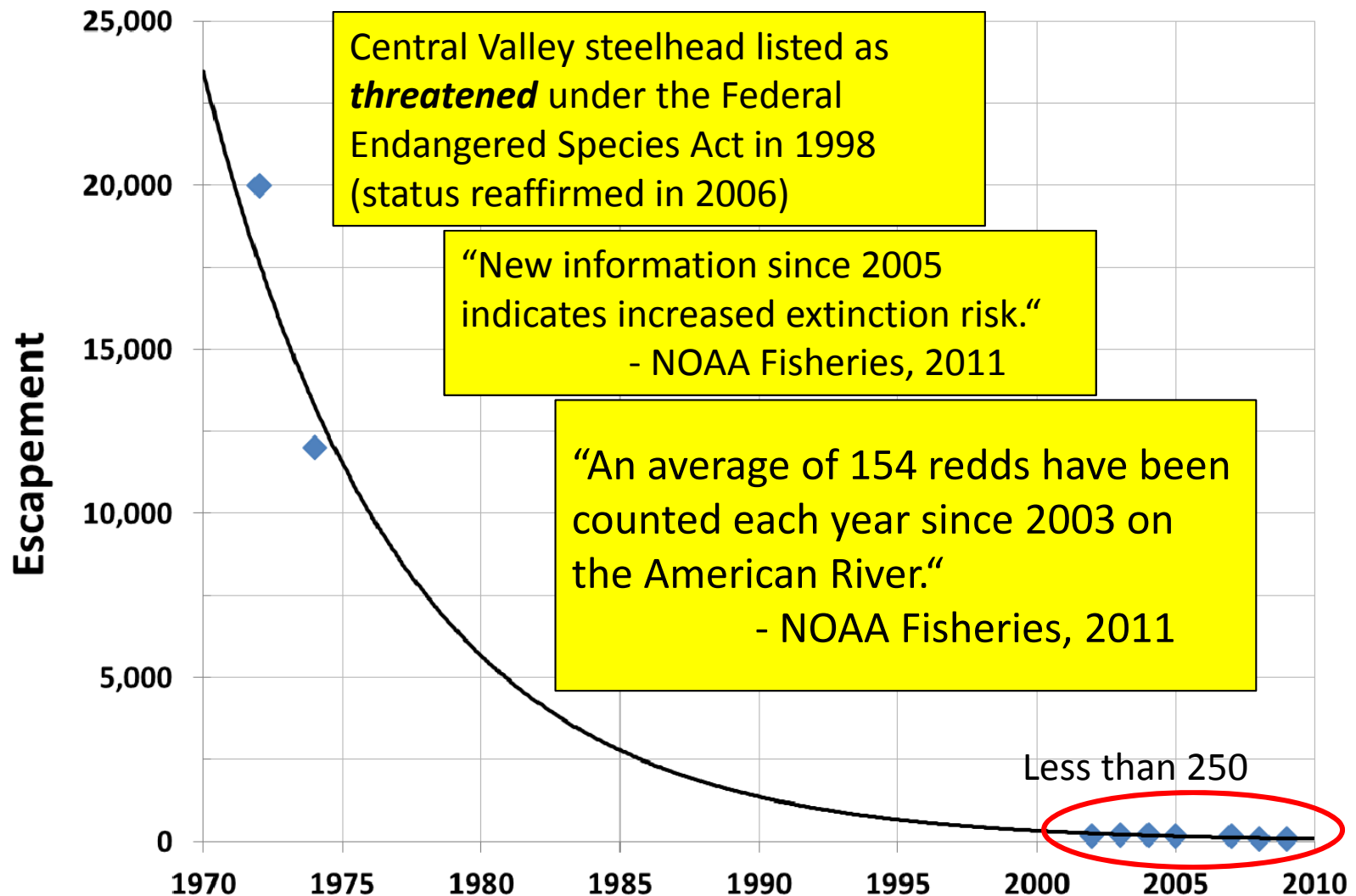
Contamination Plume

- Aerojet
- Mather
- McClellan
- Boeing
- Railyard

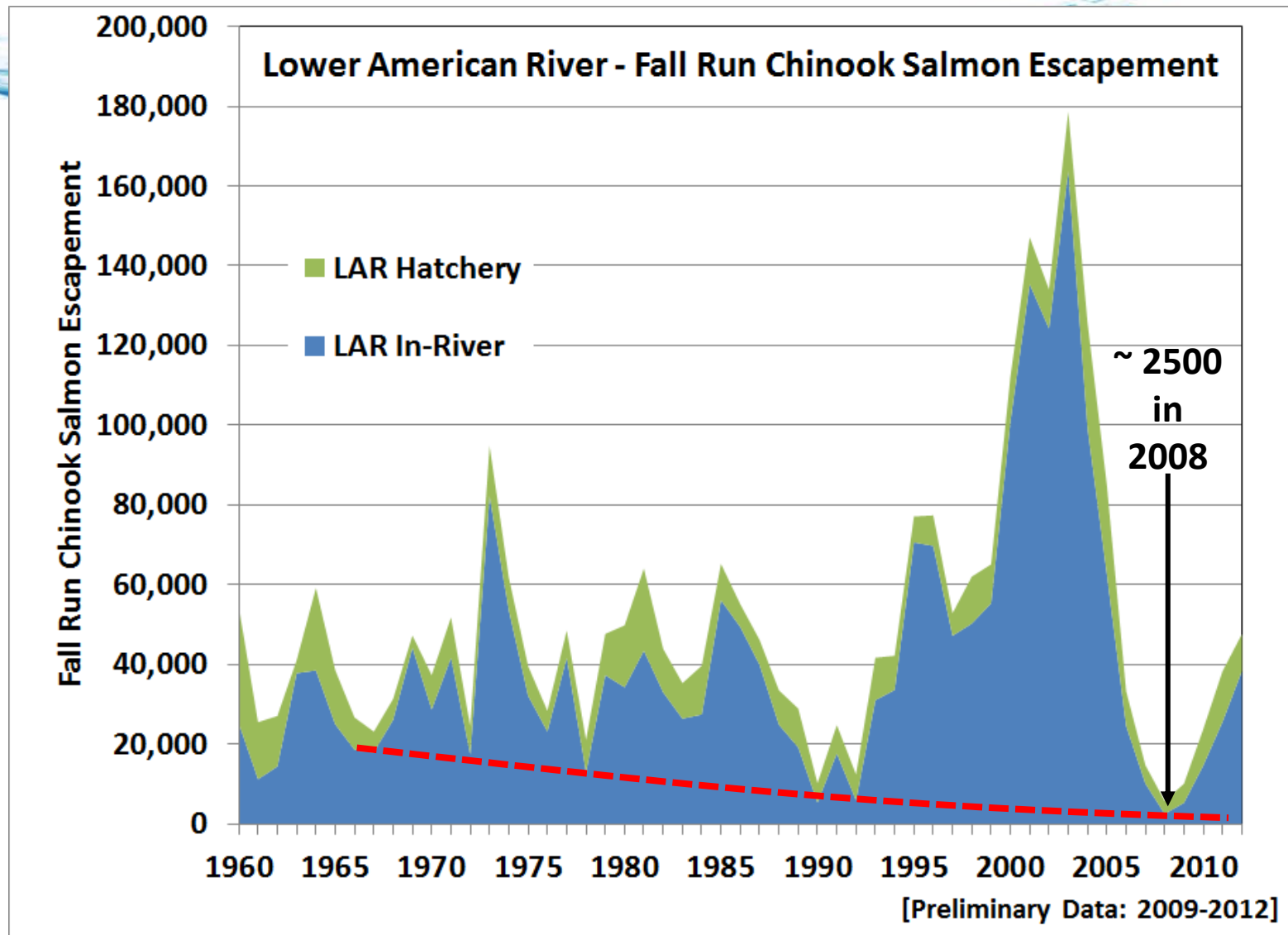


Background: Steelhead

American River Steelhead Escapement



Background: Fall-run Chinook





The Water Forum Agreement of 2000

Reliable Water Supply to 2030

Protect the lower American River

✓ **Increased Diversions**

✓ **Dry Year Actions**

✓ **Groundwater Management**

✓ **Water Conservation**

✓ **Habitat Management**

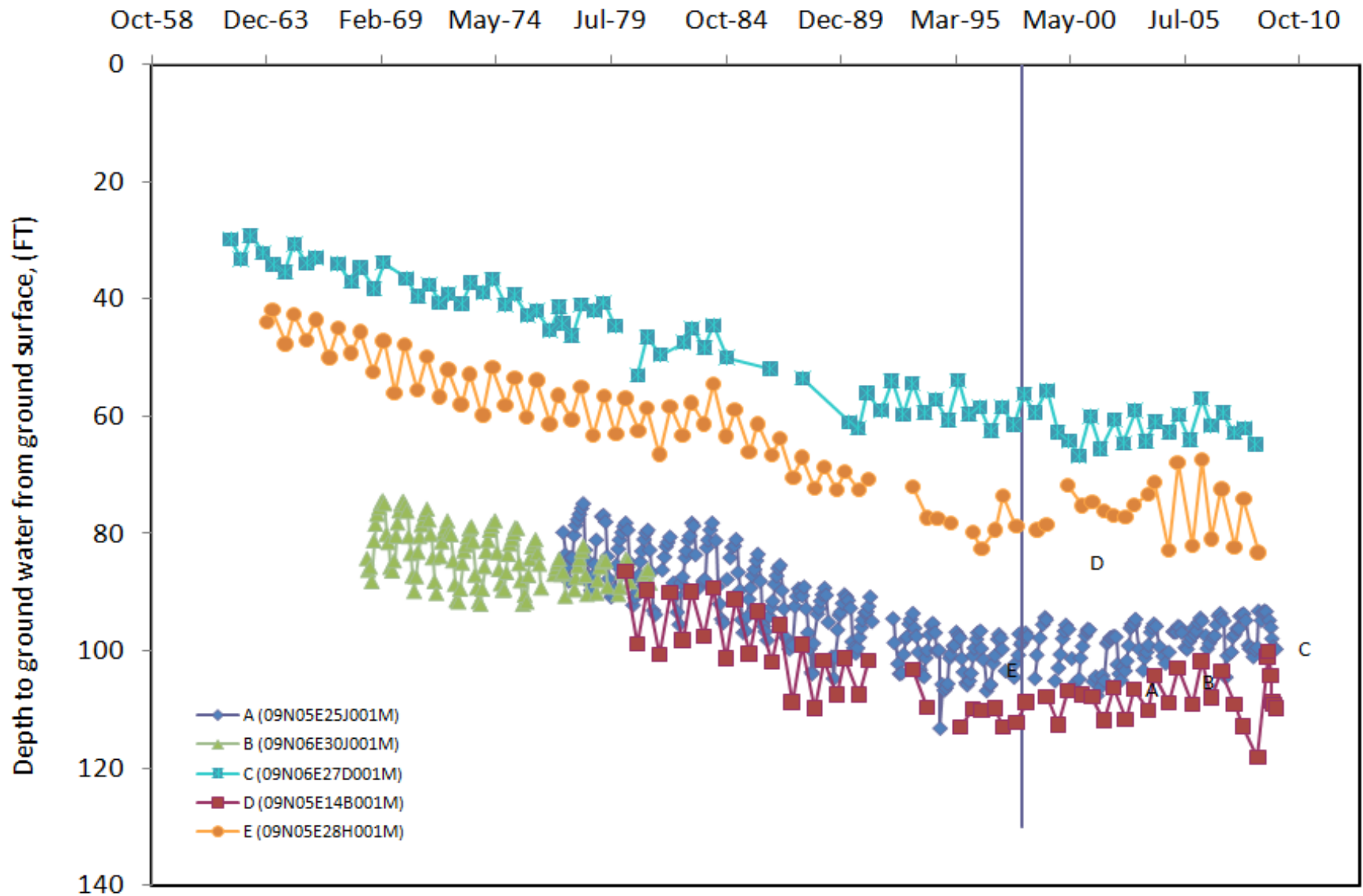
✓ **Improved Flow Standard**

✓ **Water Forum Successor Effort**



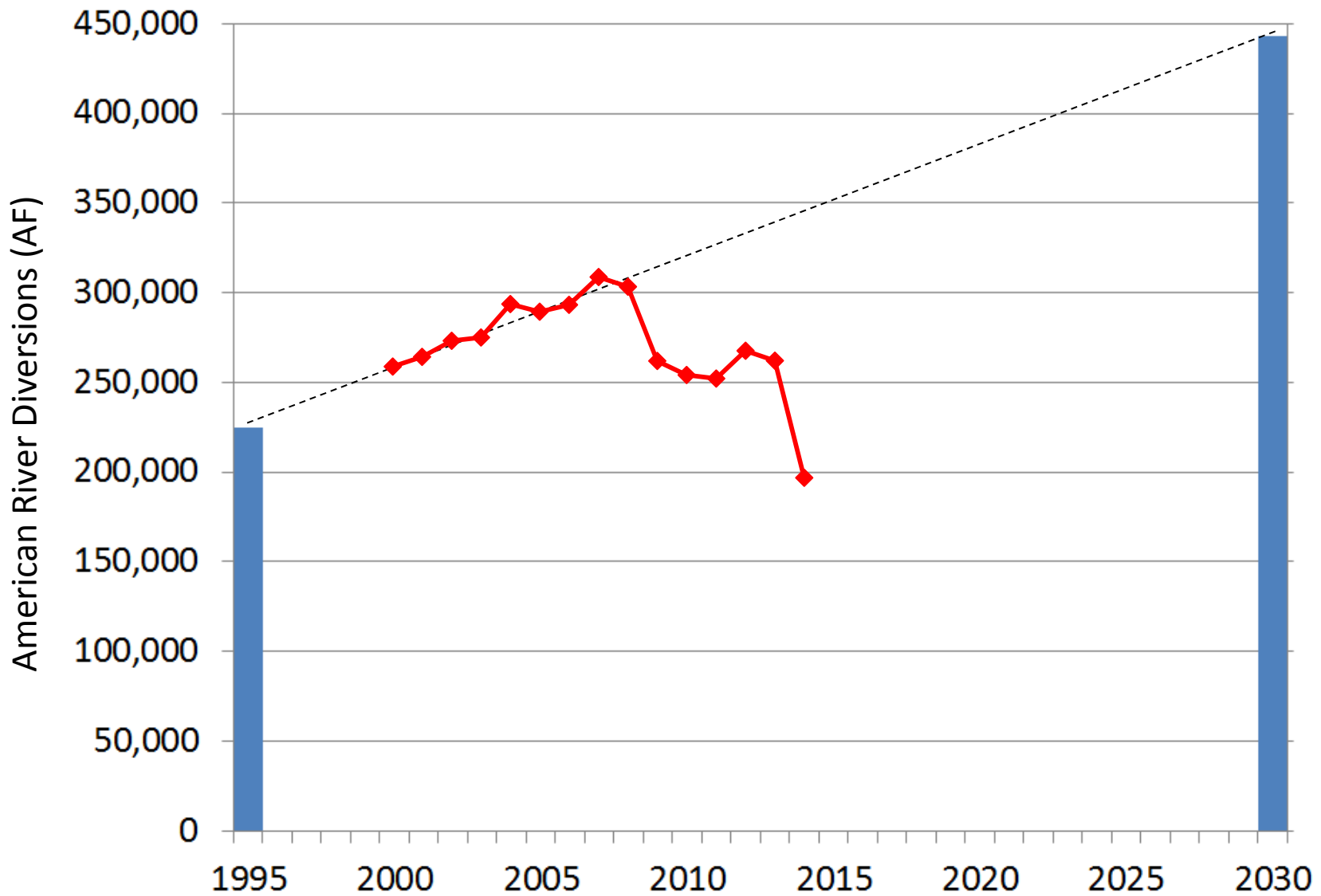
Water Infrastructure

Groundwater Conjunctive Use





Water Demand





Moved Quickly on Demand Reduction



An advertisement for water conservation featuring a Black male boxer in a blue tank top and blue boxing gloves, celebrating with his arms raised. The background is a light blue gradient. Text on the left includes "DROUGHT CHAMPS" in large orange letters, "SACRAMENTO REGION LEADS STATE IN WATER CONSERVATION" in dark blue, a blue water drop icon with "WE CAN DO MORE!" inside, and the website "BeWaterSmart.info" in orange. The boxer's tank top has a small logo of a water drop with a blue wave inside.



The Water Forum Agreement of 2000

Reliable Water Supply to 2030

Protect the lower American River

✓ **Increased Diversions**

✓ **Dry Year Actions**

✓ **Groundwater Management**

✓ **Water Conservation**

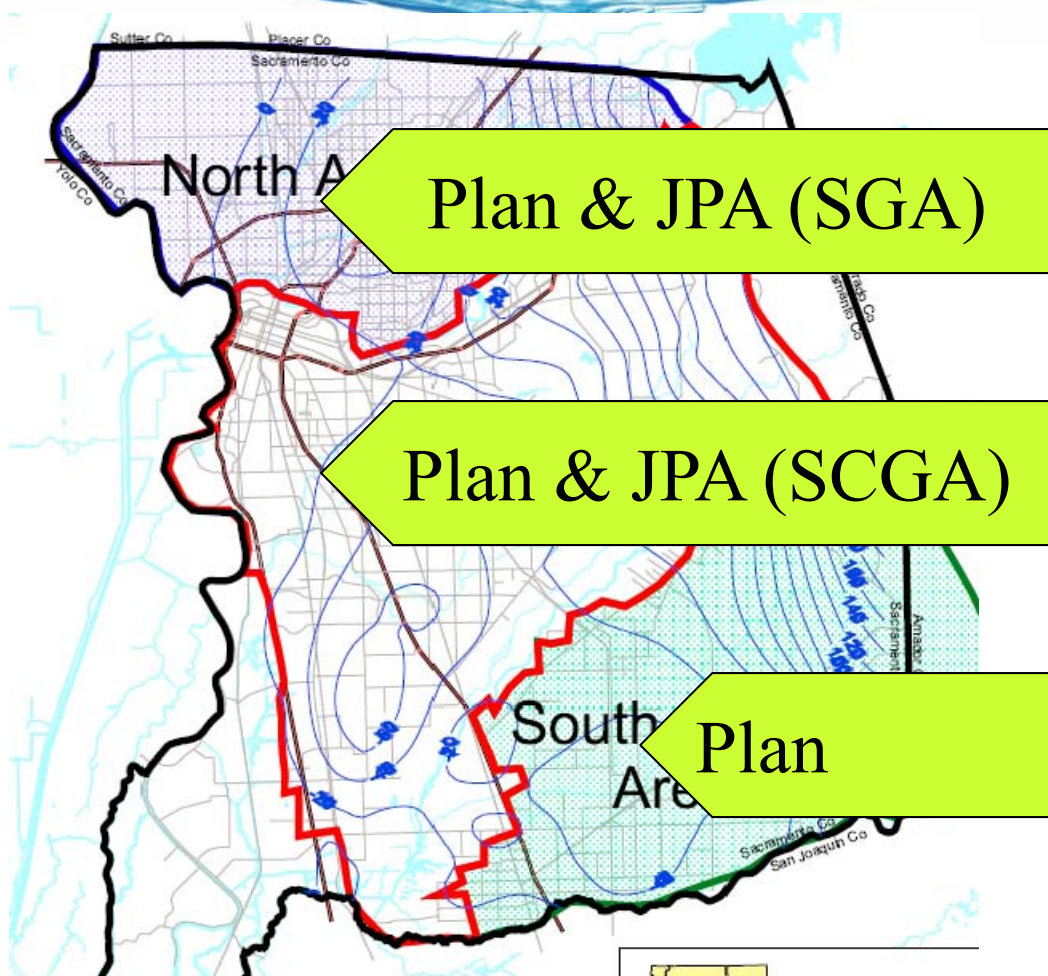
✓ **Habitat Management**

✓ **Improved Flow Standard**

✓ **Water Forum Successor Effort**



Groundwater Management Water Forum Agreement



- Sustainable Yields
- North Area
 - 131,000 Acre-feet
- Central Area
 - 273,000 Acre-feet
- South Area
 - 115,000 Acre-feet



Water Forum role in SCGA

- Facilitated a local stakeholder process
- Assisted locals to create governance body: SCGA

“This governance body would be responsible for the protection, health and long term viability of the underlying groundwater as a sustainable resource for both current and future users” (SCGA GMP, Executive Summary)



Groundwater Management



California **Groundwater**

[CA.gov](#) | [Help](#) | [Accessibility](#)

[HOME](#)

[ABOUT GROUNDWATER](#)

[LEGISLATION](#)

[TIMELINE](#)

[COMPLIANCE MAP](#)

GAB – Groundwater Act Blog

Legal Extern Surveying Local Agencies about SGMA

⋮

The Water Forum: Visionary Agreement on Sustainable Groundwater Management

February 10, 2015 | Guest post by: [Water Forum](#) / [Sacramento Central Groundwater Authority](#) / [Sacramento Groundwater Authority](#)



[>> Read More](#)

The Water Forum helped with staff, provided a facilitator, and identified representatives of various stakeholder ... By the summer of 2006, the SCGA Joint Powers Authority ...`

[» CALENDARS](#)

[» CONTACTS](#)

[» LIBRARY](#)

Forum agreement
le to bring
ions to achieve
nt, groundwater
and stakeholders



Why am I telling you this?

State Board may intervene:

- No governance structure for a basin after 2 ½ years
- No plan after five years (overdrafted basins) or ten years (other basins)
- Plan is inadequate and the basin has serious groundwater problems
- Local agency has not adequately implemented the plan and the basin has serious groundwater problems

<http://groundwater.ca.gov/moresgma.cfm>



Why am I telling you this?

Pre-SGMA Conditions and Undesirable Results:

1. Chronic lowering of groundwater levels
2. Significant reduction of groundwater storage
3. Significant seawater intrusion
4. Significant degraded water quality
5. Significant land subsidence
6. Depletions of interconnected surface

http://water.ca.gov/groundwater/sgm/pdfs/SGMA_%20GSP_Topic-1_PreSGMA_Conditions_Undesirable_Results.pdf



Why am I telling you this?

2015 California Water Policy Seminar Series

(UC Davis School of Law and the Center for Watershed Sciences)

“groundwater levels have been drawn down under the Cosumnes River to the point where now every year, ... the Cosumnes River goes dry in the lower 10 or 15 miles.”

Groundwater – Surface Water Connection



Maurice Hall



Building Upon SCGA's Success

Compliance with SGMA should not be a project started from scratch, but a process that builds on the following:

1. SCGA's success over the last 10 years
2. Water Forum's well-established interest-based process
3. Water Forum Agreement's assurances (e.g. stakeholder representation)
4. Groundwater Water Forum's and SCGA's guiding principles (e.g., respect for the autonomy of existing water purveyors)



Questions?



tgohring@waterforum.org