

Development of a Stormwater Resource Plan (SWRP) for the American River Basin

Maureen Kerner, P.E.
Office of Water Programs
California State University, Sacramento



SACRAMENTO
STATE





Overview

- What is a SWRP?
- SWRP requirements
- Proposed American River Basin SWRP
- Request for Collaboration
- Next Steps

What is a SWRP?

- Manages stormwater and dry weather runoff on a watershed scale
- Required to receive grants for runoff capture projects
 - Water Code §10563 /Senate Bill 985
 - Incentive to use runoff as a resource to:
 - improve water quality
 - reduce localized flooding
 - increase water supplies for beneficial uses

SWRP Requirements

- Define Watershed
- Involve Stakeholders
- List WQ Compliance Requirements
- Develop Quantitative Methods for:
 - Water quality benefits
 - Water supply and flood management benefits
 - Environmental and community benefits
- Identify and Prioritize Projects
- Describe Implementation
 - Strategy & schedule
 - Stakeholder involvement

Storm Water Resource Plan Guidelines



December 15, 2015

STATE WATER RESOURCES CONTROL BOARD
CALIFORNIA ENVIRONMENTAL PROTECTION AGENCY



Proposed ARB SWRP - Contents

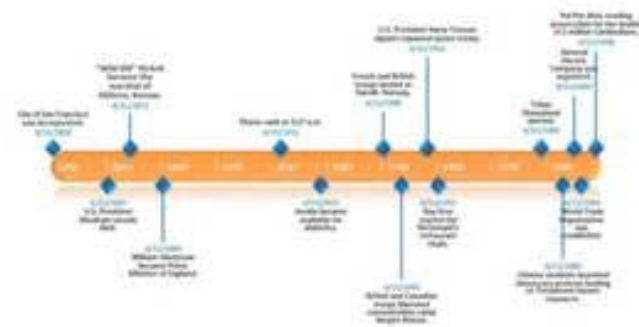
- Watershed
 - Expanded ARB IRWMP boundaries
- Stakeholder Involvement
 - Project collaborators – monthly meetings
 - Other stakeholders – IRWMP process
- WQ Compliance
 - TMDLs & NPDES/MS4 Permits
- Quantitative Methods
 - Tool box of spreadsheet calculations
- Projects and Prioritization
 - Develop maps, identify opportunities, define process
- Implementation
 - Strategy & schedule – TBD
 - Stakeholder involvement – IRWMP process



Figure 2-2. Watersheds and Surface Water Bodies

Proposed ARB SWRP - Timeline

- May – June 2016
 - Grant award and agreement development
- July 2016 – October 2017
 - Planning
 - Tool box & map development
 - SWRP writing and reviews
 - OPTI updates
- November –December 2017
 - IRWMP adoption
 - Grant close out
- January – September 2018
 - SWRP implementation
 - Planning for Prop 1, Round 2 implementation grants



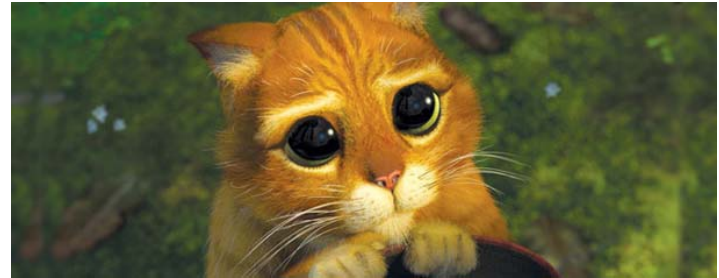
Proposed ARB SWRP - Funding

- SWRCB Prop 1 SWGP
 - Round 1 Planning and Implementation
- Collaborating Entities:
 - Regional Water Authority
 - Valley Foothill Watershed Collaborative
 - Sacramento Stormwater Quality Partnership
 - Placer Regional Stormwater Cooperating Group
 - Florin RCD
 - SAFCA
- Match Requirement – 50%
 - \$700K total project cost
 - \$350K match
- Matching Sources
 - RWA (\$10K for OPTI update)
 - In-kind labor from collaborating entities



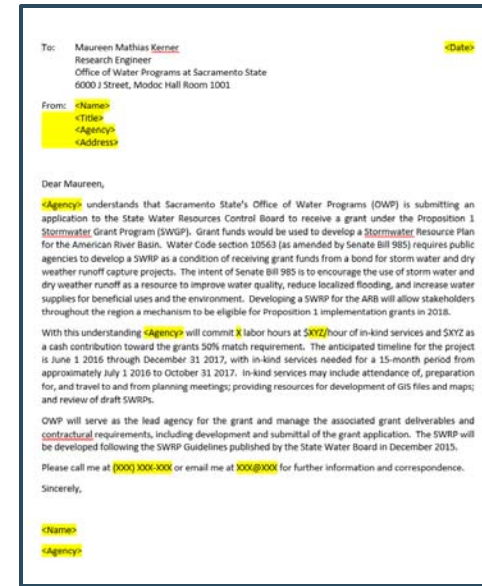
Request for Support

- **Benefits/Opportunities**
 - Permit compliance
 - Future grant funding
 - Project/program collaboration (shared costs)
- **Needs**
 - **In-kind services**
 - Attend monthly planning meetings
 - Review draft documents
 - Assist in stakeholder outreach
 - Provide resources for GIS files/maps
 - **Cash contributions**



Current Steps

- Gather Matching Commitments
- Gather Support Letters
- Submit Application
 - OWP is project lead
 - Due March 18 2016
 - Kickoff July 2016?
- Questions?
 - Maureen.kerner@owp.csus.edu
 - 916-278-8117



In-Kind Commitments for Development of a Stormwater Resource Plan for the American River Basin									
2/3/2016									
Identifier	Agency Name	Contact Name	Contact Email	Staff Title	In-Kind Hourly Rate (Direct Costs Only)	In-Kind Hours	Committed Labor Cost	Committed Cash Match	Total Match Commitment
1							\$0.00		\$0.00
2							\$0.00		\$0.00
3							\$0.00		\$0.00
4							\$0.00		\$0.00
5							\$0.00		\$0.00
6							\$0.00		\$0.00
7							\$0.00		\$0.00
8							\$0.00		\$0.00
9							\$0.00		\$0.00
10							\$0.00		\$0.00
11							\$0.00		\$0.00
12							\$0.00		\$0.00
13							\$0.00		\$0.00
14							\$0.00		\$0.00
15							\$0.00		\$0.00
16							\$0.00		\$0.00
17							\$0.00		\$0.00
18							\$0.00		\$0.00
19							\$0.00		\$0.00
20							\$0.00		\$0.00
21							\$0.00		\$0.00
22							\$0.00		\$0.00
23							\$0.00		\$0.00
								Total In-Kind	\$0.00

*Assumes approximately 14 month planning and review period

In-Kind Services Examples

- Attend Planning Meetings (up to 10)
- Review and comment on SWRP drafts (up to 4)
- Review and comment on OPTI Update
- Provide information for GIS files and maps (e.g., Native Habitats, Creeks, Lakes, Rivers, Parks, and other Natural/ Open Space)